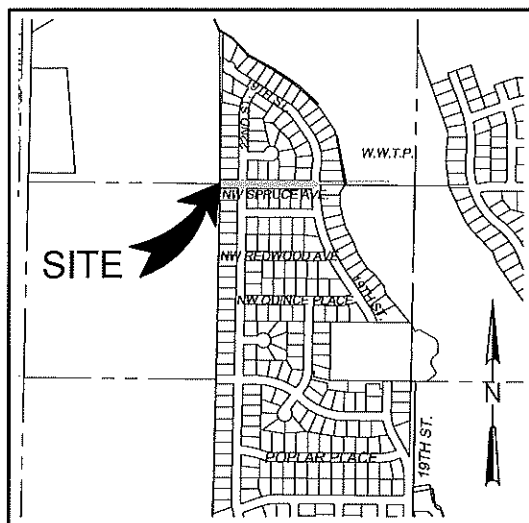




FAR WEST SEWER INTERCEPTOR FOR CITY OF REDMOND

FEBRUARY 2018
CITY OF REDMOND, DESCHUTES COUNTY, OREGON



LOCATION MAP
NOT TO SCALE

CITY OF REDMOND
 FAR WEST SEWER INTERCEPTOR
 COVER SHEET
 CITY OF REDMOND, OREGON

LEGEND:

EXISTING FEATURES

- PROPERTY LINE
- CURB LINE
- STORM DRAIN LINE
- OVERHEAD POWER LINES
- UNDERGROUND POWER LINE PER LOCATE MARKS
- UNDERGROUND GAS LINE PER LOCATE MARKS
- UNDERGROUND GAS CORROSION CABLE
- UNDERGROUND TELEPHONE LINE PER LOCATE MARKS
- UNDERGROUND WATER LINE PER LOCATE MARKS
- UNDERGROUND SEWER LINE PER LOCATE MARKS
- FENCE
- EX. ASPHALT PAVING (TO REMAIN)
- CONCRETE
- CATCH BASIN
- FIRE HYDRANT
- GATE VALVE
- WATER METER
- LIGHT
- UTILITY POLE/ANCHOR
- UTILITY POLE
- ELECTRIC TRANSFORMER & PAD
- ELECTRIC SERVICE
- CABLE TV SERVICE/RISER
- TELEPHONE RISER
- GAS SERVICE
- SEWER MANHOLE
- CONTOUR LINE, 1' INTERVAL
- CONIFEROUS TREE
- DECIDUOUS TREE

PROPOSED IMPROVEMENTS

- CURB LINE
- SEWER LINE (SIZE AS NOTED)
- SEWER LINE TO BE REMOVED OR ABANDONED
- BENCH MARK
- NEW ASPHALT PAVING

GENERAL CONSTRUCTION NOTES

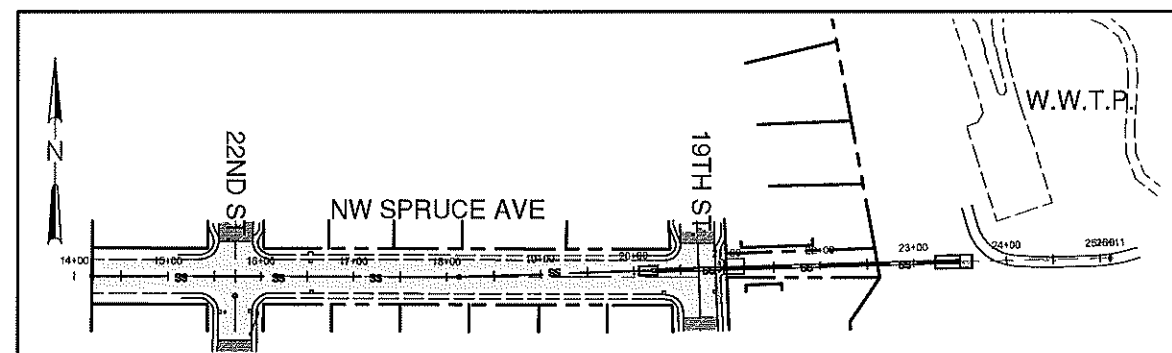
1. INSPECTION OF PUBLIC AND SITE GRADING/DRAINAGE IMPROVEMENTS WILL BE PERFORMED BY THE CITY OF REDMOND ENGINEERING DEPARTMENT WITH THE EXCEPTION OF PLUMBING CODE/PERMIT IMPROVEMENTS.
2. EXCAVATION SHALL CONFORM TO THE PROVISIONS OF OAR 852-001-0090.
3. WHERE APPLICABLE, ALL MATERIALS AND WORKMANSHIP SHALL CONFORM TO THE CURRENT CITY OF REDMOND PUBLIC WORKS STANDARDS AND SPECIFICATIONS REQUIREMENTS.
4. CONTRACTOR IS REQUIRED TO NOTIFY THE CITY OF REDMOND 24 HOURS IN ADVANCE OF COMMENCING CONSTRUCTION AND TO COORDINATE INSPECTIONS UNTIL PROJECT IS DEEMED COMPLETE BY THE ENGINEERING DEPARTMENT.
5. ACCESS TO EXISTING PROPERTIES/RESIDENCES AFFECTED BY CONSTRUCTION ACTIVITIES SHALL BE MAINTAINED AT ALL TIMES BY THE CONTRACTOR. EMERGENCY ACCESS AND COORDINATION OF REDMOND EMERGENCY SERVICES SHALL BE REQUIRED.
6. SURVEY MONUMENTS, CONTROLS, OR PROPERTY CORNERS WHICH ARE DISTURBED OR DESTROYED BY CONSTRUCTION ACTIVITIES SHALL BE RE-ESTABLISHED, RESTORED AND/OR REPLACED AT THE CONTRACTOR'S EXPENSE.
7. CONTRACTOR IS RESPONSIBLE FOR CONTACTING THE OREGON UTILITY NOTIFICATION CENTER FOR LOCATES PRIOR TO EXCAVATION. CONTRACTOR SHALL VERIFY LOCATION AND ELEVATION OF EXISTING UTILITIES.
8. TOPOGRAPHIC INFORMATION SHOWN IS BASED ON A FIELD SURVEY PERFORMED BY WESTRIDGE DEVELOPMENT IN 2008 AND UPDATED BY HWA IN OCTOBER 2017.
9. ALL NECESSARY CHANGES TO DESIGN PLANS, REVEALED DURING CONSTRUCTION, MUST BE APPROVED BY THE DESIGN ENGINEER AND CITY OF REDMOND.
10. PLAN APPROVAL DOES NOT ASSUME LIABILITY FOR ERRORS AND OMISSIONS IN THE DESIGN AND/OR CONSTRUCTION PLANS.
11. ALL EXISTING TREES ARE TO BE PROTECTED IN PLACE, UNLESS NOTED OTHERWISE.
12. 8" GRAVITY SEWER PIPE SHALL BE ASTM D3034, SDR 35, 30" GRAVITY SEWER PIPE SHALL BE ASTM F679, PS 115.
13. MAINTAIN ACCESS TO ALL RESIDENCES DURING CONSTRUCTION.
14. 60-INCH MANHOLES SHALL BE POLYMER CONCRETE.

APPROVALS _____

DATE _____

CITY OF REDMOND ENGINEER: _____

NOTE: SIGNATURE DOES NOT GRANT APPROVAL TO COMMENCE CONSTRUCTION.



VICINITY MAP / SHEET INDEX

SCALE: 1"=100'

PERMANENT BENCH MARK USED

| ID | DESCRIPTION | NORTHING | EASTING | ELEV |
|----|-------------|-----------|------------|---------|
| #1 | SET PK NAIL | 474749.73 | 3324394.50 | 2868.06 |
| #2 | SET PK NAIL | 474620.68 | 3324065.90 | 2930.89 |

SCHEDULE OF IMPROVEMENTS:

- 1 EACH 48" SANITARY SEWER MANHOLE
- 4 EACH 60" POLYMER CONCRETE SANITARY SEWER MANHOLE
- 49 LF 8" SANITARY SEWER PIPE
- 928 LF 30" SANITARY SEWER PIPE
- 381 LF 14" CURB REPLACEMENT
- 237 LF 12" CURB REPLACEMENT
- 1747 SF CONCRETE SIDEWALK (INCLUDING ADA RAMPS)

SHEET INDEX:

- C1.0 COVER SHEET
- C2.0 PLAN & PROFILE, STA 14+18.41-19+00
- C3.0 PLAN & PROFILE, STA 19+00 - 23+45.41
- C4.0 CONSTRUCTION DETAILS
- C5.0 ADA RAMP GRADING DETAILS
- C6.0 ADA RAMP GRADING DETAILS

REVISIONS:



DESIGNED BY: MPD
 DRAWN BY: MPD
 CHECKED BY: BP
 SCALE: AS NOTED
 FILE: 170715-CD
 DATE: 02/15/18

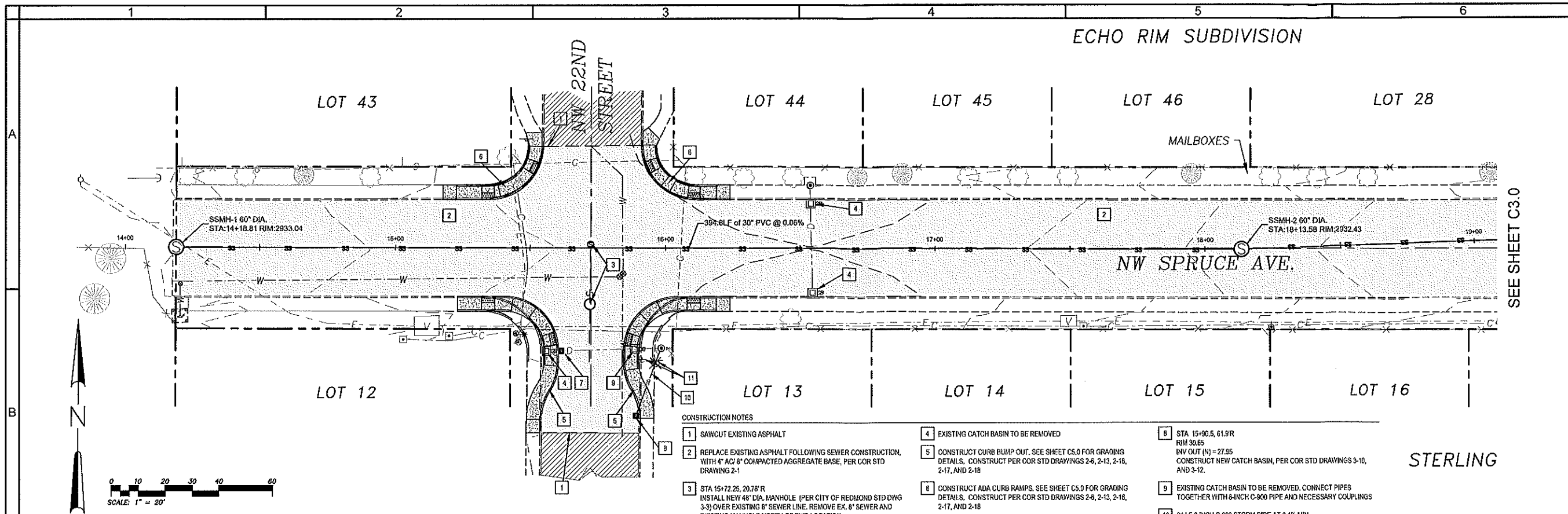
VERIFY SCALES
 0 1"
 BAR EQUALS ONE INCH
 ON ORIGINAL DRAWING

SHEET:
C1.0

HWA # 170715

mark S: \Land Projects\170715 Redmond Far West Sewer Interceptor\170715-CD.dwg Thu Feb 15, 2018 - 2:40pm

mark 5: \Land Projects\170715 Redmond For West Sewer Interceptor\170715-CD.dwg Thu Feb 15, 2018 - 2:42pm



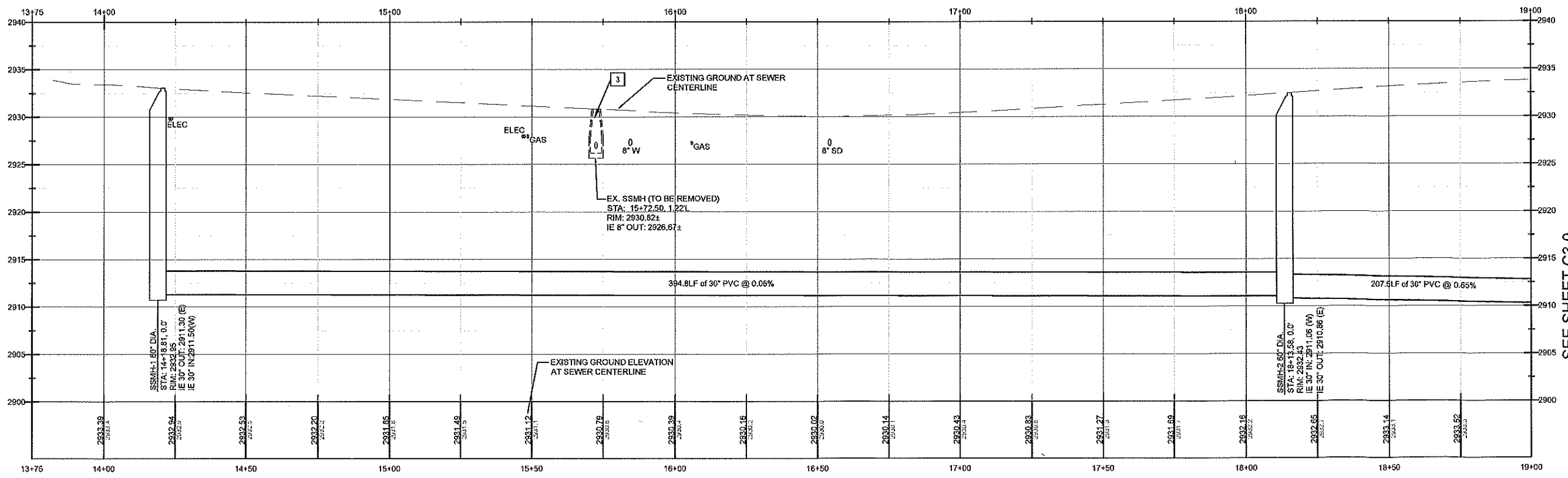
PLAN, STA 14+18.81 - 19+00
SCALE: 1" = 20'

CONSTRUCTION NOTES

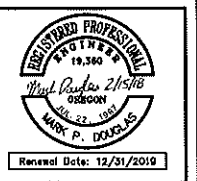
- 1 SAWCUT EXISTING ASPHALT
- 2 REPLACE EXISTING ASPHALT FOLLOWING SEWER CONSTRUCTION, WITH 4" AC/ 8" COMPACTED AGGREGATE BASE, PER COR STD DRAWING 2-1
- 3 STA 15+72.25, 20.78' R
INSTALL NEW 48" DIA. MANHOLE (PER CITY OF REDMOND STD DWG 3-3) OVER EXISTING 8" SEWER LINE. REMOVE EX. 8" SEWER AND EXISTING MANHOLE NORTH OF THIS LOCATION
- 4 EXISTING CATCH BASIN TO BE REMOVED
- 5 CONSTRUCT CURB BUMP OUT. SEE SHEET C5.0 FOR GRADING DETAILS. CONSTRUCT PER COR STD DRAWINGS 2-6, 2-13, 2-16, 2-17, AND 2-18
- 6 CONSTRUCT ADA CURB RAMPS. SEE SHEET C5.0 FOR GRADING DETAILS. CONSTRUCT PER COR STD DRAWINGS 2-8, 2-13, 2-16, 2-17, AND 2-18
- 7 STA 15+60.6, 38.1' R
RIM 30.37
CONSTRUCT NEW CATCH BASIN AT NEW CURB LINE ON EXISTING STORM DRAIN LINE, PER COR STD DRAWINGS 3-10, AND 3-12
- 8 STA 15+90.5, 61.5' R
RIM 30.65
INV OUT (N) = 27.95
CONSTRUCT NEW CATCH BASIN, PER COR STD DRAWINGS 3-10, AND 3-12
- 9 EXISTING CATCH BASIN TO BE REMOVED. CONNECT PIPES TOGETHER WITH 8-INCH C-900 PIPE AND NECESSARY COUPLINGS
- 10 24 LF 8-INCH C-900 STORM PIPE AT 0.4% MIN. CONNECT TO EXISTING DRYWELL.
INV IN(S) = 26.82
- 11 RELOCATE EXISTING STREET NAME / STOP SIGN ON NEW POST PER COR STD DRAWINGS 2-24, 2-25, AND 2-26

NOTES:

- 1. SEWER MAINS TO BE CONSTRUCTED PER COR STD DWG 3-1
- 2. SEWER MANHOLES TO BE CONSTRUCTED PER COR STD DWGS 3-3 AND 3-7



PROFILE, STA 14+18.81 - 19+00
SCALE: HORZ.: 1" = 20'
VERT.: 1" = 6'



CITY OF REDMOND
FAR WEST SEWER INTERCEPTOR
PLAN AND PROFILE, STA 14+18.81 - 19+00
CITY OF REDMOND, OREGON

REVISIONS:

| | |
|--|--|
| | |
| | |
| | |
| | |
| | |



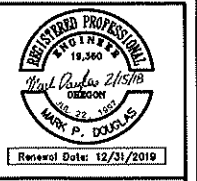
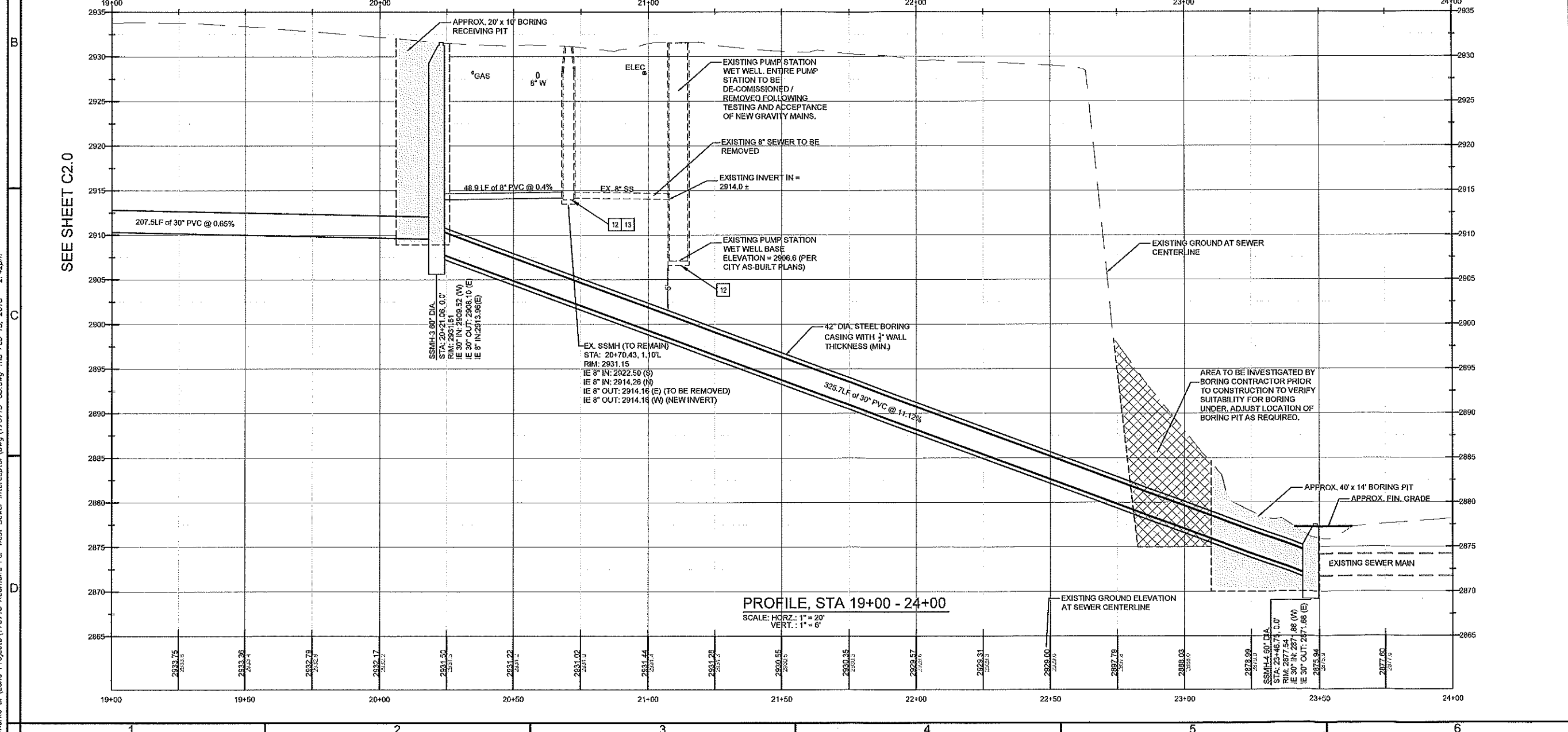
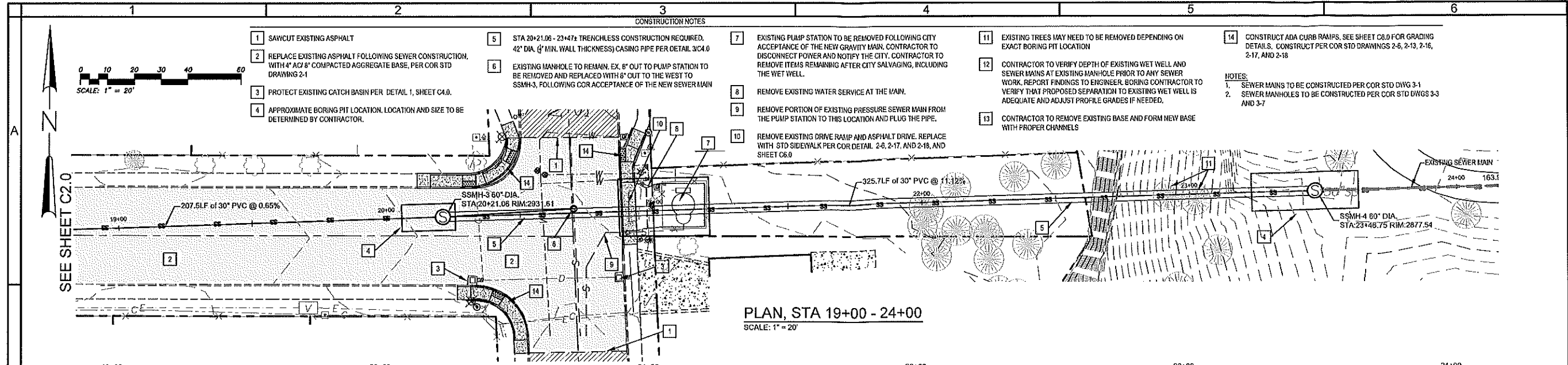
DESIGNED BY: MPD
DRAWN BY: MPD
CHECKED BY: BP
SCALE: AS NOTED
FILE: 170715-CD
DATE: 02/15/18

VERIFY SCALES
1" BAR EQUALS ONE INCH ON ORIGINAL DRAWING

SHEET: C2.0

HWA # 170715

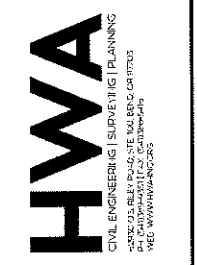
mark S:\Land Projects\170715 Redmond For West Sewer Interceptor\Drawings\170715-CD.dwg Thu Feb 15, 2018 - 2:42pm



CITY OF REDMOND
FAR WEST SEWER INTERCEPTOR
PLAN AND PROFILE, STA 19+00 - 24+00
CITY OF REDMOND, OREGON

REVISIONS:

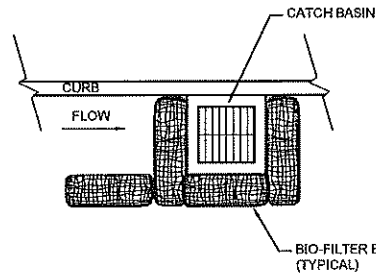
| | | |
|--|--|--|
| | | |
| | | |
| | | |



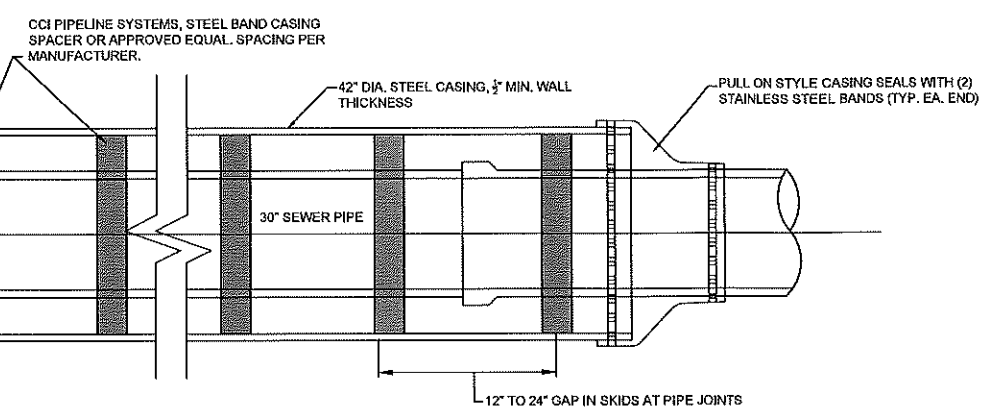
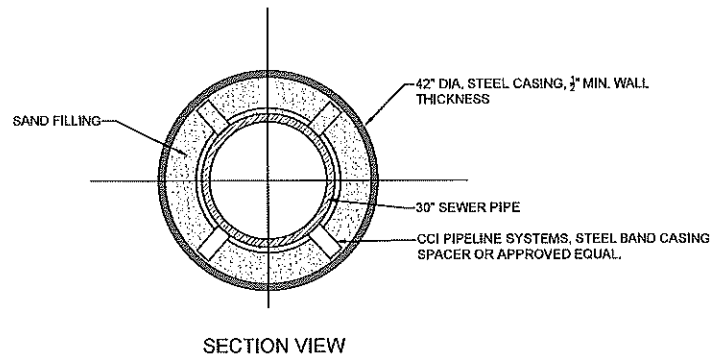
| | |
|------------------|----------------|
| DESIGNED BY: MPD | DATE: 02/15/18 |
| DRAWN BY: MPD | |
| CHECKED BY: BP | |
| SCALE: AS NOTED | |
| FILE: 170715-CD | |

VERIFY SCALES
0 1"
BAR EQUALS ONE INCH ON ORIGINAL DRAWING

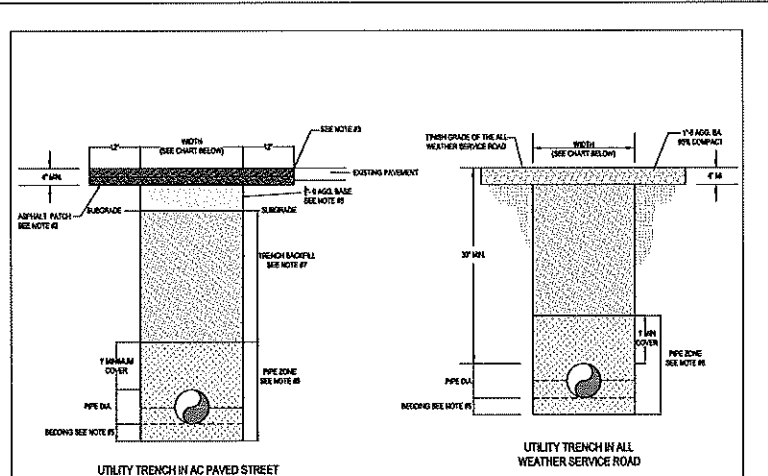
SHEET:
C3.0
HWA # 170715



1
C4.0
BIOBAG CATCH BASIN PROTECTION DETAIL
SCALE: NOT TO SCALE



3
C4.0
BORE CASING DETAIL
SCALE: NOT TO SCALE



TRENCH WIDTH & DEPTH

| PIPE SIZE I.D. | DEPTH MAX. | WIDTH MAX. |
|----------------|------------|------------|
| LESS THAN 6" | 30" | 24" |
| 6" | 40" | 24" |
| 8" | 42" | 26" |
| 10" | 44" | 26" |
| 12" | 46" | 26" |
| 15" | 49" | 30" |
| 18" | 52" | 34" |
| 30" | 66" | 45" |

- NOTE:**
- SAW CUT JOINTS SHALL BE TACKED AND SAND SEALED.
 - ASPHALT PATCH SECTION SHALL BE NOT LESS THAN 4" THICK, PLACED IN TWO LIFTS NOT TO EXCEED 2".
 - BASE MATERIAL SHALL MEET CURRENT CITY STANDARDS AS SHOWN IN STANDARD DRAWING 2-1.
 - TRENCHES LESS THAN 24" IN WIDTH UNDER PAVEMENT, CURB AND/OR SIDEWALK AREAS SHALL BE BACKFILLED WITH CEMENT SLURRY OR CONTROLLED LOW STRENGTH MATERIAL. OTHER TRENCHES IN HIGH TRAFFIC AREAS MAY BE BACKFILLED WITH CONTROLLED LOW STRENGTH MATERIAL AS REQUIRED BY THE CITY ENGINEER.
 - PIPE BEDDING SHALL BE 4" MINIMUM DEPTH.
 - PIPE ZONE MATERIAL SHALL BE CLASS 10" BACKFILL, COMPACTED TO 95% OF MAXIMUM DENSITY AASHTO T-99, FOR PIPES LARGER THAN 3" PLACE FIRST LIFT TO PIPE SPRINGLINE.
 - CLASS "X" TRENCH BACKFILL MATERIAL IS ALLOWED FROM 2' ABOVE PIPE TO SUBGRADE FOR TRENCHES DEEPER THAN 6 FEET (FINISH GRADE TO TOP OF PIPE).

2
C4.0
UTILITY TRENCH
SCALE: NOT TO SCALE

CITY OF REDMOND PUBLIC WORKS DEPARTMENT

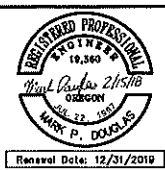
SCALE: NTS

DRAWN BY: CCI

APPROVED BY: MPC

REVISION DATE: 1/12/2011

STANDARD DRAWING NO. 1-1



CITY OF REDMOND
FAR WEST SEWER INTERCEPTOR
CONSTRUCTION DETAILS
CITY OF REDMOND, OREGON

REVISIONS:



DESIGNED BY: MPD
DRAWN BY: MPD
CHECKED BY: BP
SCALE: AS NOTED
FILE: 170715-CD
DATE: 02/15/18

VERIFY SCALES
0 1" BAR EQUALS ONE INCH ON ORIGINAL DRAWING

SHEET: **C4.0**

HWA # 170715

markd S: Land Projects 170715 Redmond Far West Sewer Interceptor.dwg 170715-CD.dwg Thu Feb 15, 2018 - 2:43pm

